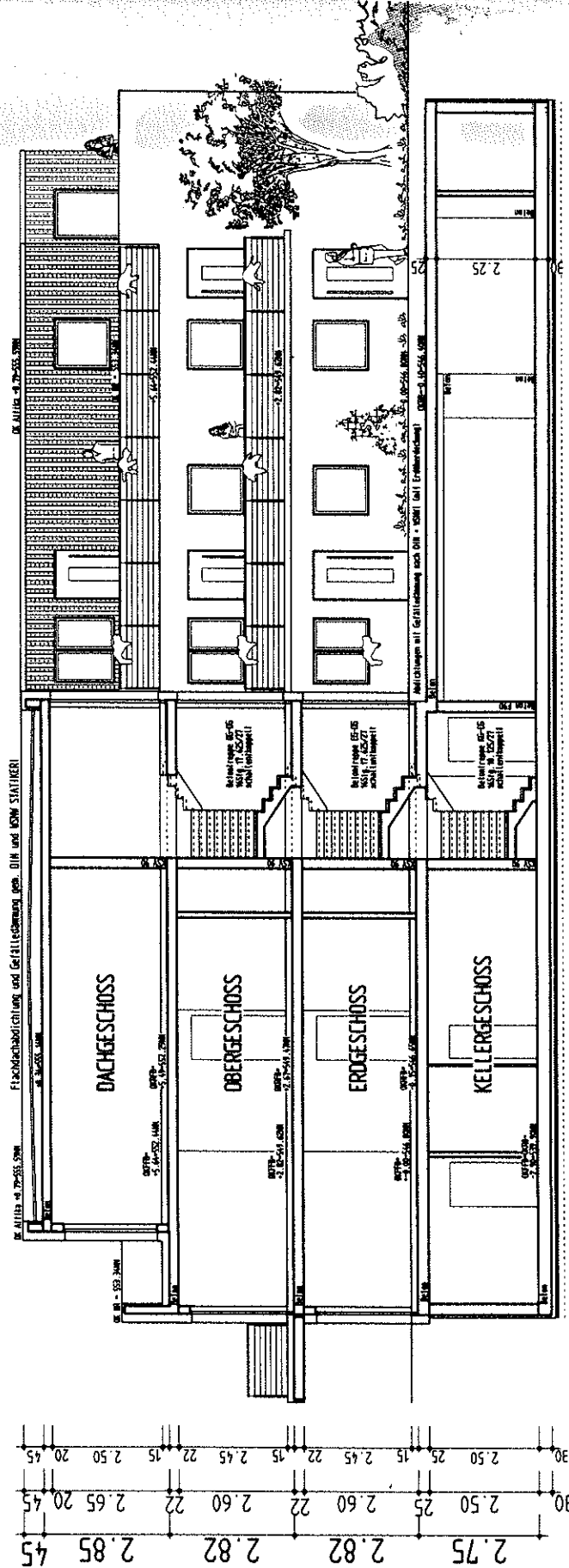
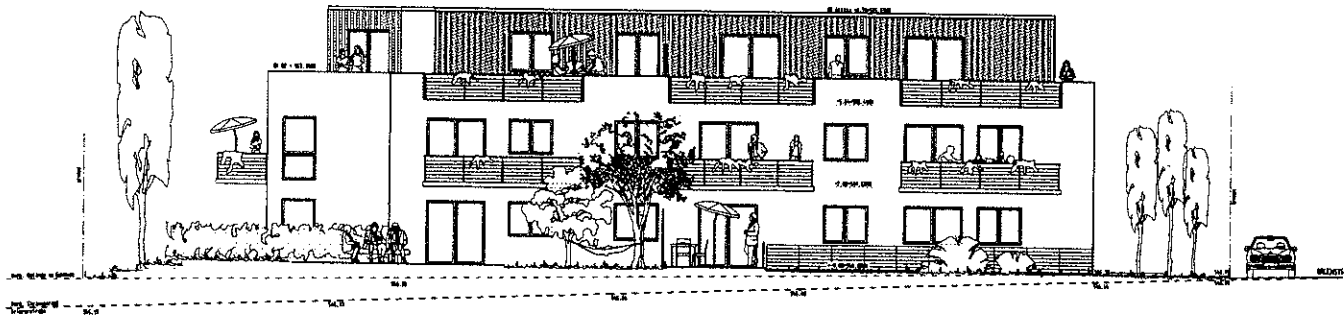


ZU TOP 5

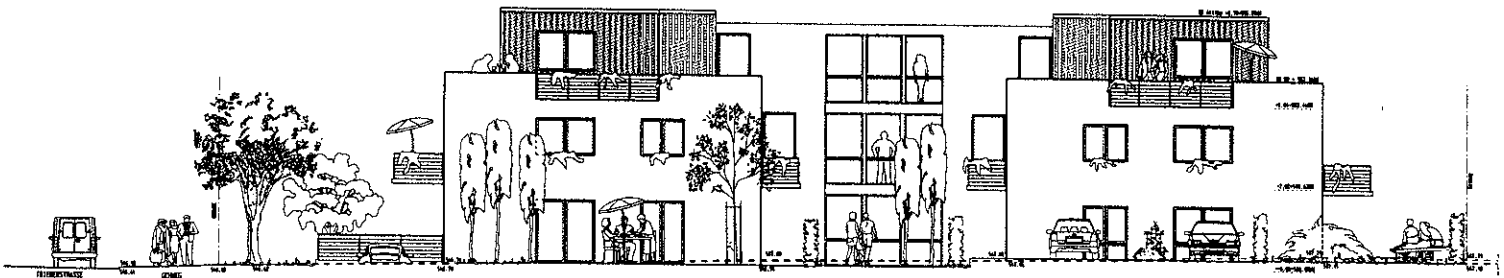
10. Änderung des Belastungsplanes Imzgenbreich Nr. 2



Alle Fundamente nach STATIKI - Frostfreie Gründung!
Dämmung Bodenplattenbereiche und Aussenwände KG gem. MSW STATIKER!

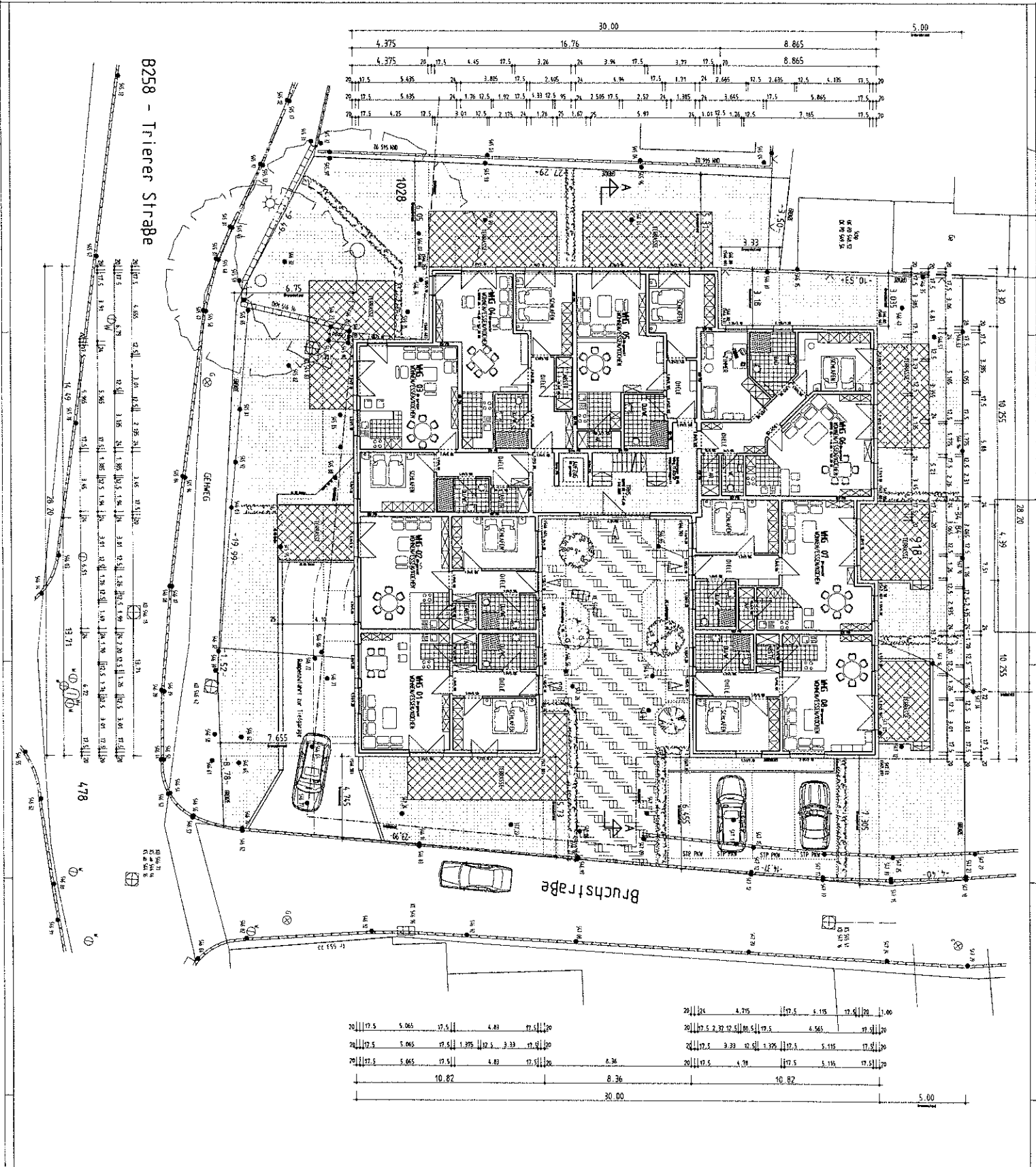


ANSICHT VON OSTEN (TRIERERSTRASSE)



ANSICHT VON NORDEN (BRUCHSTRASSE)

Erdgeschoss



B258 - Trierer Straße

Bruchstraße

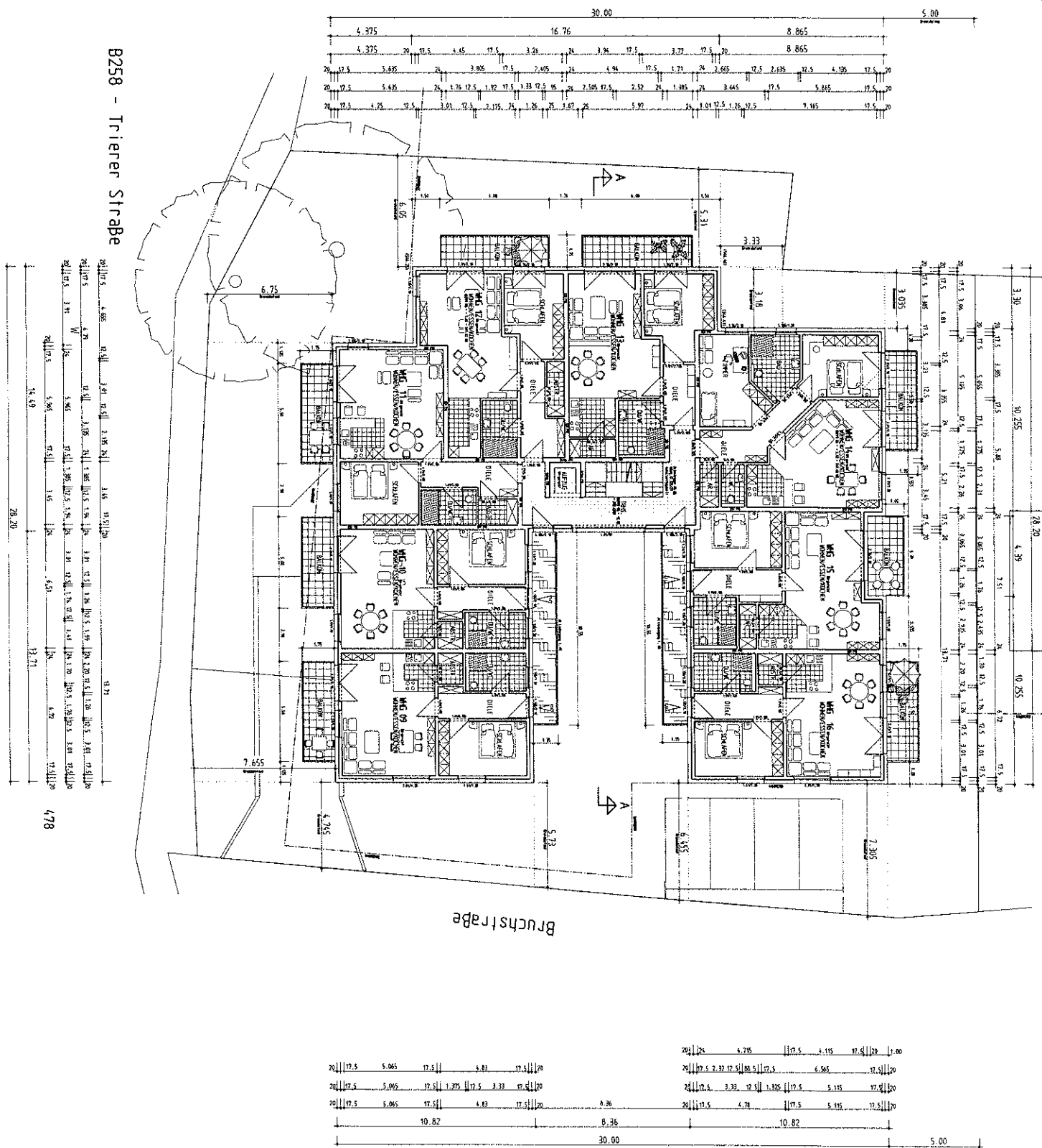
478

20	17.5	5.065	17.5	4.83	17.5	20	4.715	17.5	4.115	17.4	1.00
20	17.5	5.065	17.5	1.375	17.5	20	2.32	17.5	4.565	17.5	20
20	17.5	5.065	17.5	1.375	17.5	20	3.33	17.5	5.115	17.5	20
20	17.5	5.065	17.5	4.83	17.5	20	6.36	17.5	4.78	17.5	20
			10.82				8.36		10.82		
							30.00				5.00

Obergeschoss

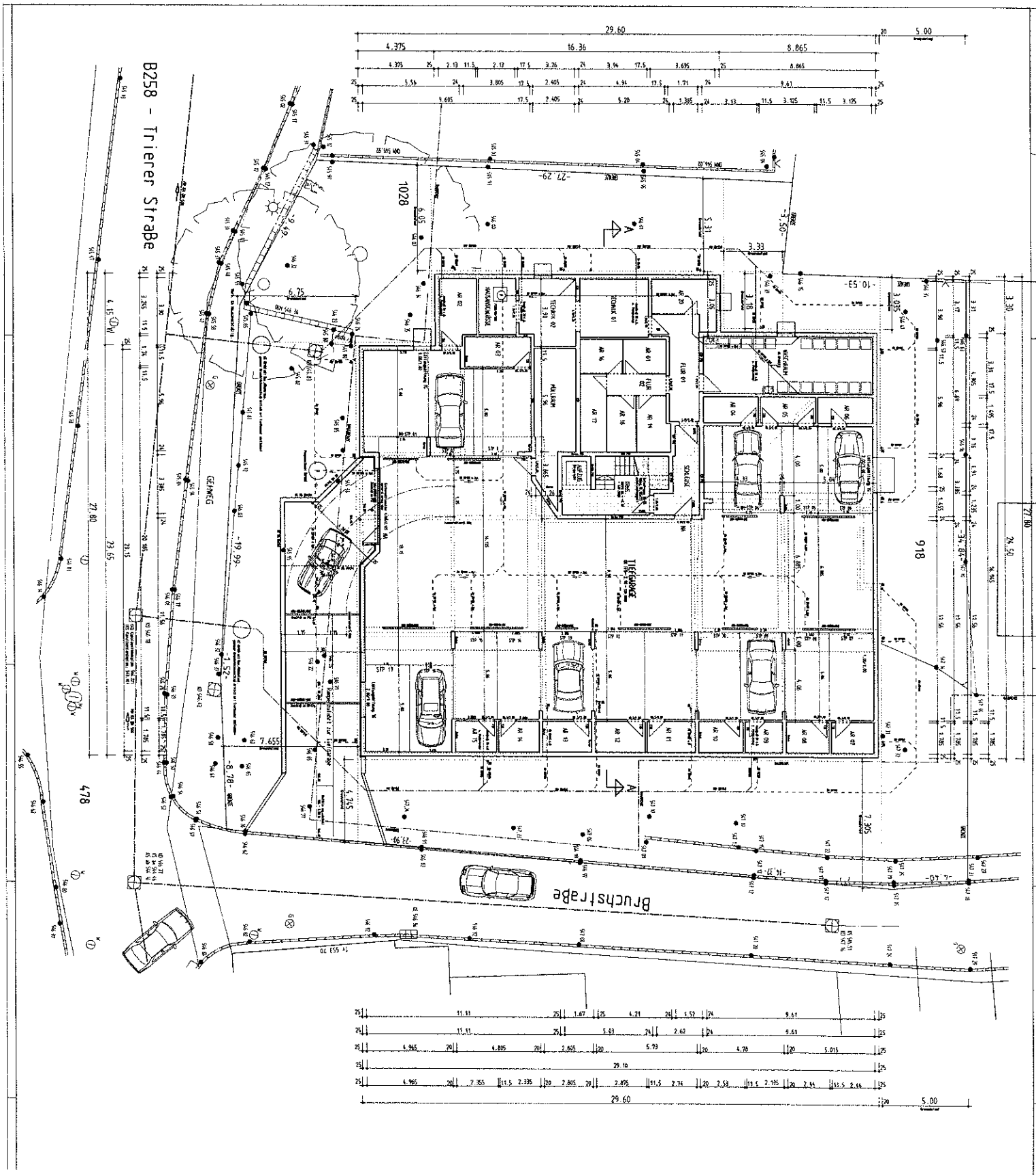
B258 - Trierer Strabe

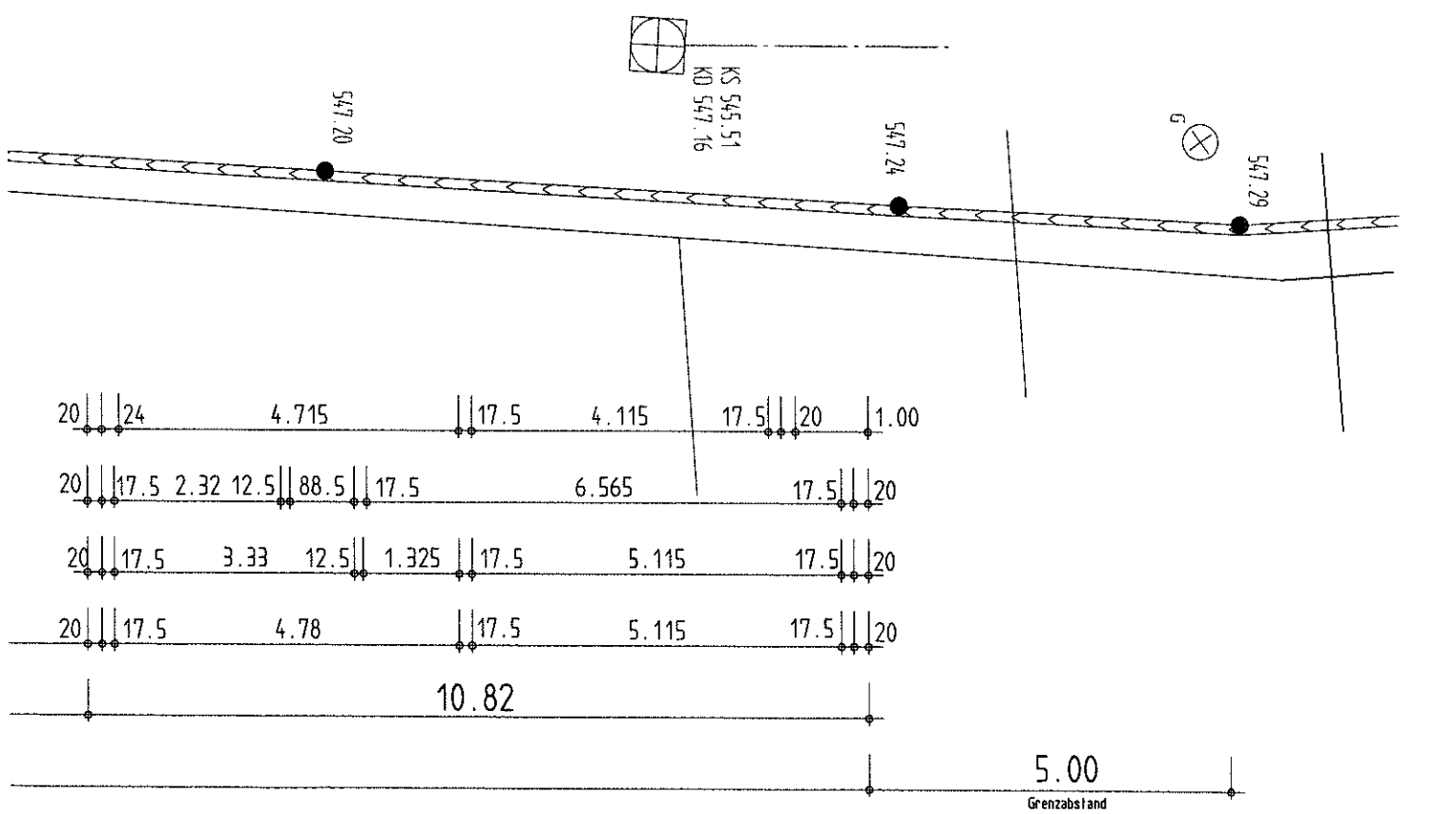
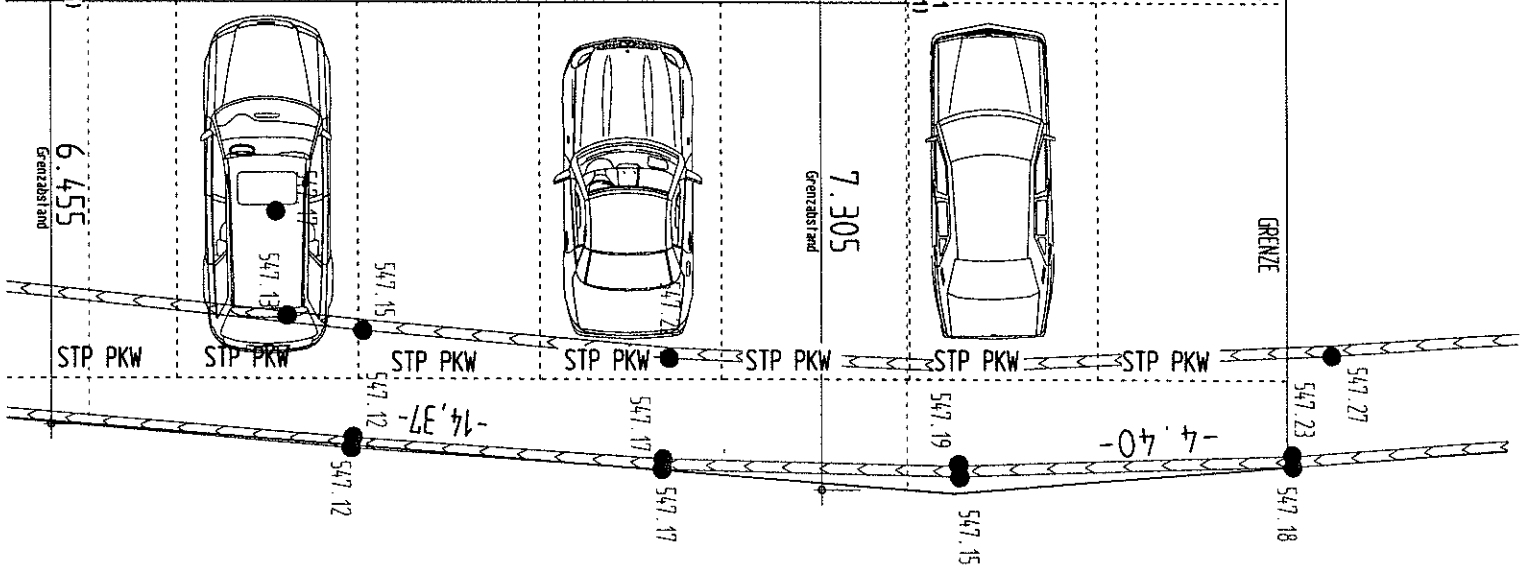
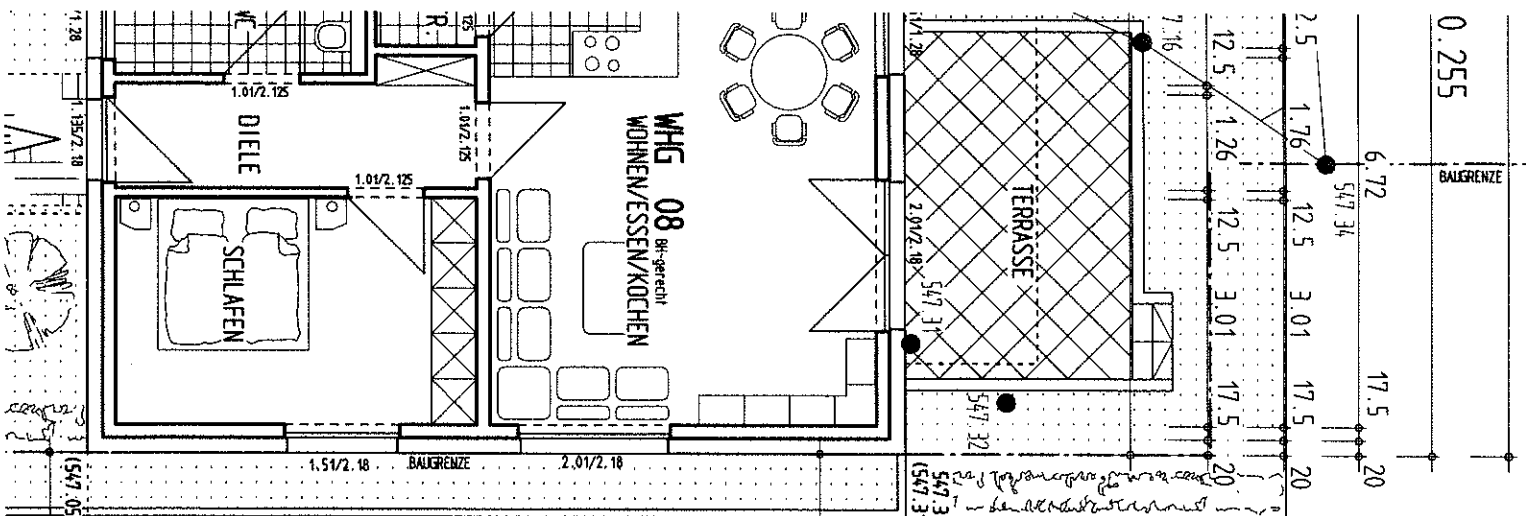
Bruchstrabe



478

Tiefgarage

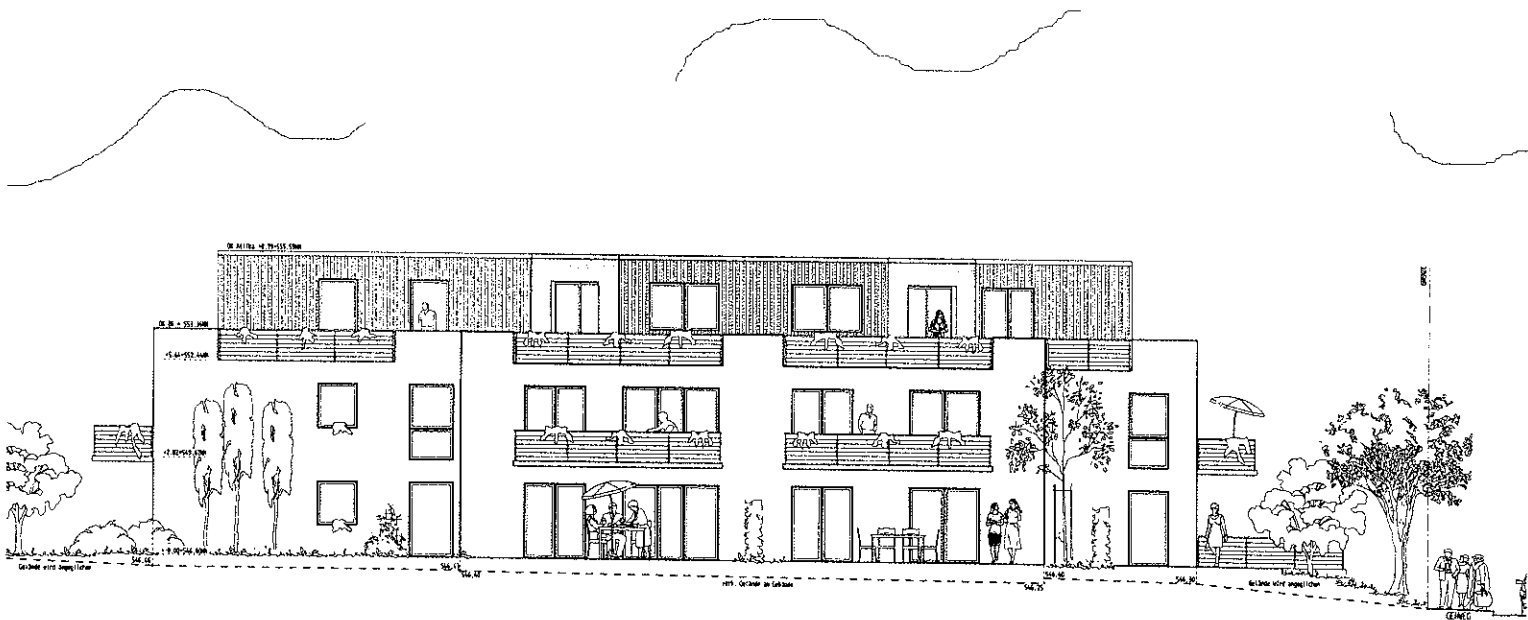




geänderte Stellplätze



ANSICHT VON WESTEN



ANSICHT VON SÜDEN